



**YOUR DEFENSE
PARTNER OF
CHOICE**





ABOUT US

Key Force (KF) is a specialized defense and innovation division under Key Holding, a Washington, D. C. based enterprise dedicated to advancing next-generation technologies and strategic security solutions. With a mission rooted in creating a powerful defense nucleus for the North and south America, Middle East and beyond, KF stands out for its commitment to excellence in design, development, testing, evaluation, and technological innovation.

KF delivers a comprehensive suite of advanced products and services across key domains, including land systems, weaponry, ammunition, electronics, electro-optics, troop gear, and emerging disruptive technologies such as artificial intelligence, virtual reality, Cybersecurity, and additive manufacturing (3D printing). It also provides cutting-edge ballistics testing and specialized training programs.

All operations are conducted within the state-of-the-art Industrial Free Zone, a purpose-built innovation and manufacturing hub that enables full-spectrum research, development, and production capabilities. To support its international presence and expand its operational footprint, KF operates regional offices in Washington DC, Dubai, London and Mexico City.

KF's operations are strategically organized into four core clusters to maximize impact, efficiency, and innovation:

1. LAND SYSTEM & INDUSTRIAL SOLUTIONS CLUSTER.
2. TROOPS GEAR & ARMAMENT SOLUTIONS CLUSTER.
3. SMART-TECH ZONE CLUSTER.
4. SUPPORT & SERVICES CLUSTER.



Research & Development

In light of the new, rapid and multiple challenges and variables, organizations are looking for appropriate creative solutions to keep pace with global changes in the field of science and technology, as clear future vision provides sufficient flexibility and the ability to respond necessary to the various rapid changes imposed by the competitive environment. Therefore, the strategy of research and development in KF as a Design House relies on scientific and applied research methodologies that directed to accomplishment and meeting requirements of the end user from the beginning to the end of the development/research project.

The scope of work of the Research and Development Directorate covers several areas, including ground systems, weapons, electronic systems and unmanned systems, which are implemented by following best practices in project management. Projects development stages include: studies and research, design, manufacturing/prototyping, test and evaluation, and user trials. In addition, research and development activities focus on achieving technological progress and knowledge transfer through strategic partnerships with global research institutions by their participation in identifying, selecting and training next generation of Jordanian engineers and scientists.

The introduction of new locally developed products within the defense industries is an important competitive advantage that enhances self-reliance and sustainability.



LAND SYSTEMS & INDUSTRIAL SOLUTIONS CLUSTER

The scope of work covered by the Land Systems & Industrial Solutions Cluster at KF aims to fulfill the needs and requirements of its clients to provide solutions for light, medium and heavy vehicle with various categories, in addition to other related industrial solutions related to mega projects.



LAND SYSTEMS & INDUSTRIAL SOLUTIONS CLUSTER



AL-WAHSH 4X4

Al-Wahsh vehicle is designed and developed to meet the modern warfare mission requirements and to operate in all kinds of terrains. It is designed for troop transportation along with their tactical gear. The vehicle provides different levels of protection against small arms bullets, and fragments of projectiles. Capable to accommodate up to 10 crewmen.

Ballistic Protection	STANAG II & STANAG III
Crew	8 + 2
Engine	Diesel 370 HP
Transmission	Automatic 6 speed
Suspension	Independent suspension
Wheels	CTIS and Run-Flat
Anti - Mine	Upon request

Optional

Armored Closed / Opened Turret with Customized Weapon Mount / RPG 7 Protection / RWS

Applications

- Armored Personnel carrier
- Armored Fighting , Support & Combat vehicle
- Borders Security
- Command & Control unit



AL-WAHSH AL-KASER



KF is integrating high-tech reliable systems into the Al-Wahsh armored vehicle to provide maximum protection for military convoys and troops operating within hostile areas. The vehicle offers effective firepower, supports specific engagement operations, and performs multiple and varied missions. It is characterized by its high tactical and combat capabilities in difficult and rugged terrains, in addition to having day and night surveillance, detection, and jamming capabilities to meet the requirements and duties assigned to it, whether for special operations, quick response, reconnaissance and protection, or peacekeeping duties.

Features:

- High mobility Wahsh 4x4 armored vehicle with up to STANAG 4569 KE L3/A protection level.
- Ground surveillance radar with covering range up to 40km.
- Stabilized RWS comes with 12.7mm machine gun.
- Long range day/thermal camera with following ranges:
- Gunshot detection system that will guarantee fastest response.
- RCIED system will provide Jamming on RF channels of UAVs, GPS, cellphones and RCIEDs.
- Intercom system for crew compartment.
- The ability to add any type of communication systems and crew services.

	Tank size target 2.3x2.3m	Human size target 1.8x0.5m
Detection	16000m	10000m
Recognition	9000m	4000m
Identification	4500m	2000m

Specifications:

Crew	4 crew members
Armament	12.7mm Stabilized RWS with 400 round read to fire
Dimensions (L x W x H)	5800 x 2200 x 4330mm
Gross Vehicle Weight	18,000 Kg
Engine	Diesel , 370 HP
Suspension	High Mobility suspension
Maximum Road Speed	110 Km/h
Wheels	CTIS and Run-Flat



PHANTOM B6 + B7



KF is integrating high-tech, reliable systems into the **Phantom** armored vehicle to deliver unparalleled protection for military convoys and personnel in hostile conditions. The Phantom combines effective firepower with the versatility needed for specialized engagement operations and multi-mission functionality. Known for its high tactical and combat efficiency, it excels in harsh and unforgiving terrains. With advanced capabilities such as day-and-night surveillance, detection, and jamming systems, the Phantom is built to address the demands of modern military operations, including special operations, quick response, reconnaissance, protection, and peacekeeping duties.

PHANTOM AND SPECS

Length, mm	6400
width, mm	2300
height, mm	2550
GVW, kg	Up to 8800
Ground clearance, mm	280
Engine power	330
Crew	2+2+6 (up to 11)
Transmission	Automatic
Transfer case	2 shifts
suspension	Rigit axles
Breaking system	Hydraulic with ABS
Steering system	hydraulic
tires	335/80R20 with «Run Flat»
protection	B6
Blast protection	Stanag 4569 1a/1b
Electrical system,V	24
Side inclination, %	40

SCORPION B6 - B7



KF is integrating high-tech, reliable systems into the **Scorpion** armored vehicle to ensure maximum protection for military convoys and troops operating in hostile environments. The Scorpion delivers exceptional firepower, supporting specialized engagement operations and excelling in a variety of mission profiles. It is renowned for its superior tactical and combat capabilities, even in rugged and challenging terrains. Equipped with advanced day-and-night surveillance, detection, and jamming technologies, the Scorpion is designed to meet the diverse requirements of military operations, including special operations, rapid response, reconnaissance, protection, and peacekeeping missions.

Vehicle	TOYOTA LC 79
Engine	4.5L V8 TURBO
Fuel Type	DIESEL
Seats	8
Color	BLACK, CAMOUFLAGE
Level	TEBR6/BS EN 1522 FB6XT
Standards	NATO
Materials	Ballistic level B6
TIRES	RUN-FLAT



SAIF - B6 + B7



Al-Saif is an armored vehicle designed by combining advanced technology with modern design to achieve high protection and excellent mobility and versatility in difficult and rugged terrains. Its exceptional maneuverability allows for rapid deployment and response, ensuring mission success in any environment. This ensures the success of missions in any potential environment and delivers superior and effective performance in internal security and armed forces missions. It is designed to meet various operational needs, from peacekeeping and reconnaissance to direct engagement, based on the user's requirements.

The "Saif" armored vehicle is equipped with cutting-edge communication systems, modular interior configurations, in addition to the possibility of being fitted with various systems such as a fire suppression system, jamming systems, a laser warning system, and a monitoring system (SAS).

Specifications:

Crew	5
Armament	Medium caliber weapons
Total Weight (Kg)	11,000 kg
Protection Level	Ballistic protection STANAG level II
Engine	285 Hp
Suspension	High Mobility suspension
Maximum Road Speed (Km)	110
Gradability & side slope (Pa)	60° & 30°



AL-JAWAD

Al-Jawad APC is designed and built on heavy duty chassis with 6.7L Diesel Engine, Al-Jawad guarantees high automotive performance & maneuvering, adequate payload and considerable tactical capabilities.

With its flexibility to get in duty inside cities and narrow roads with easy maneuvering; Al Jawad is the optimal choice for law enforcement, internal security, tactical response teams and Special Forces.

Crew	8+2
Ballistic Protection	B6 , B7 and STANAG II
Gross Vehicle Weight	8620 Kg
Engine	Diesel 370 HP
Transmission	Automatic 10 speed
Suspension	Heavy Duty Leaf Spring



AL-MAHA

Al – Maha is an armored tactical 4 x 4 internal security vehicle, designed and developed to meet operational requirements for law enforcement and special operations.

Al Maha provides excellent mobility and maneuverability within urban areas and narrow roads, adaptable to be equipped with various types of machine guns and remote weapon stations.

Ballistic Protection	CEN B6
Crew	2 + 6
Engine	Diesel 195 HP
Transmission	Manual 5 speed
Suspension	Heavy Duty Suspension
Wheels	Run-Flat
Max. Speed	120 km/hr





AL-BARQ

High mobility off-road armored tactical vehicle designed for various applications including fast response, border patrol, reconnaissance, forest rangers, and special operations.

Applications:

- Special Forces operations.
- Border security forces operations.
- Fast response forces operations.
- Exploration and reconnaissance operations.

Protection	BR4.
Crew	3
Engine	195hp Petrol turbocharged
Transmission	Quick Response System CVT
Armament	Light up to 7.62mm MG

AL-BARQ EVACUATION

- Comes with air conditioning system.
- Equipped with Run-Flat.
- Easy mechanism to deploy stretcher in the field.
- Equipped with IR lights.
- Equipped with siren system.



High mobility off – road armored tactical vehicle armored with exceptional maneuverability in various terrains, including rugged areas. It is designed to meet the needs of medical evacuation operations from the engagement zone to safe areas for providing necessary medical care. The vehicle combines protection, comfort, and speed, making it the optimal choice for handling special task missions, infantry units, border security duties, and rapid response tasks.

Specifications:

Item	Specs
Protection	Armored of BR4 Front
Crew	2
Engine	200hp Rotax ACE 900 cc Petrol Turbocharged
Transmission	Quick Response system
GVW	Kg 1750



AL-SAHM



AL-SAHM AL-SAHM Electric Utility Task Vehicle (UTV) is environmentally friendly, lightweight, and high-speed, is combining cutting-edge technology with robust performance, It is designed to meet end user diverse needs with unmatched efficiency and power.

Silent rides, zero emissions, low maintenance costs, high torque and great acceleration that can be provided by AL-SAHM Electric UTV equipped with a powerful electric engine and appropriately sized batteries for long driving periods, which generate high torque and significant acceleration.

Specifications:

Total (Kg)	1700
Approach & Departure angles	50° & 70°
Crew	2
Max speed (km/h)	2
Max Gradient(%)	45°
Battery type	Lithium Ion
Battery Energy(KWh)	54.8
Range Per Charge (Km)	200
Max horsepower (Pa)	294

QUAD NASHAB ON AL-WASHAQ



Small light weight 4x4 armored vehicle build on OEM Toyota Hilux Pick-Up, designed and developed to provide a protracted convey that meets the operations requirements of military armed forces, special operations, low enforcement inside urban areas and narrow streets, also the vehicle can be used as an armored reconnaissance vehicle. To increase the fire lethality against concrete and other types of emplacements or tank and armored vehicle target, the vehicle equipped with a remote controlled firing platform for Quad - Nashab rockets.

Features:

- Run at system.
- Ability to launch 4 Nashshab rockets (RPG 32).
- Targeting and firing from inside the vehicle.
- IR Lights

Applications:

- Special operations
- Low enforcement agencies operations.
- Reconnaissance operations.

Crew	2
Protection Level	BR6
Engine	Diesel 147 hp
Transmission	Manual -6Speeds
Range	600Km on road

Armament

Number of rocket launchers	4
Auxiliary Gun	7.62mm MG with 400 rounds box
Elevation range	°5-to °30+
Traverse range	360N°
Salvo mode	YES
Number of reserve rockets	4





AL-HAJRAS



Compact size, light-weight & high mobility 4x4 armored tactical vehicle, designed to fulfill the military operational requirements and to provide reliable option for protecting convoys of military, special operations and law enforcement forces in urban areas, and confined spaces.

Applications:

- Special forces operations
- Fast response forces operations.
- Internal security operations.
- Exploration and reconnaissance operations.

Specifications:

Crew	2
Engine	4 cylinders, Gasoline
Transmission	Automatic 4 4speeds
Armament	Light RWS supports 7.62 machine gun



MILITARIZED TACTICAL / PATROL VEHICLES



Vehicles have been designed to fulfill the roles of Tactical Surveillance and Reconnaissance (SR) whilst conducting Special Role tasks, the vehicles primary role is to place patrol in the areas of operations where targets can be observed, in addition to many other applications that could be implemented on the vehicles.

Whilst conducting OA tasks, the vehicles primary role is to be a highly mobile weapons platform from which the mounted support weapons may be used to their best effect (to deliver effective and precise fire in the a selected target with sustained accuracy).

Features:

- Armored or Soft Skin
- Single or Double Cabin.
- Rear Roll cage and tubular frame.
- Crew: 4 – up to 8 (upon request and configuration selected).
- 360° Rotational Ring with weapon mount.
- Swing arm with weapon mount
- High capability suspension system
- Upgrade brake system
- Ditch crossing ladders or assault ladders
- Sand channels
- Front Electric Winch.



DISCRETE / CIVILIAN ARMORED VEHICLES

Providing the ultimate combination of comfort, security, style, and performance, offered with a high degree of functionality and reliability, powerful engines, and upgrades.

Wide range of fully armored SUV's from various manufacturers with various levels of protection levels (B4, B6, B7 & aother protection levels as requested).

The additional weight of armoring requires Mechanical upgrades to be applied and carried out which includes door hinges, Suspension, Brakes, Tiers and run-flat, and many other optional upgrades upon customer requirement.



CASH IN TRANSIT VEHICLES (CIT)



CIT vehicles aim to provide a safe and secure transportation for Cash, bank deposits, ATM cash replenishments, coin delivery or precious assets. The different variants of vehicles suit every need from small Pick Up conversions to Bulk Carriers with a high payload.

With integrated latest technology security systems and electronics, which facilitate the implementation of different response tactics to achieve optimal results, while keeping the operating forces safe from harm.

General Features

- Armored of CEN Level B6, B4 or B3
- Transportation of three to four persons.
- The rear area contains the safe with shelves
- passenger seats separated by an armoured door locked by three types of locks



CYCLONE

MOBILE ROCKET LAUNCHER



The CYCLONE 70 mm rocket launcher is mounted on a 4X4 vehicle. This multi-barrel ground artillery rocket weapon is designed and developed to deliver intense and rapid fire on high-value ground targets, achieving direct hits and providing a high volume of fire to neutralize and destroy various enemy units and strategic target sites.

The launcher carries 30 rockets that can be fired in continuous mode within 60 seconds. Additionally, the launcher can be set to manual mode to fire a single rocket in just 2 seconds.

Technical Specifications

Rocket caliber: 70 mm (2.75 Inch NATO)

Maximum range: More than 10 km

Number of barrels: 30

Number of outriggers: 4

Firing system: Automatic & Manual (based on the operator)

Elevation system: Hydraulic

Rotation system: Electric & Manual (Backup)

Rescue winch

Night vision system

Rear camera

Vehicle type: Toyota Land Cruiser 79
(Can be mounted on other vehicles)





CYCLONE

TOWED ROCKET LAUNCHER



The CYCLONE 70 mm rocket launcher is towed by a vehicle and is a multi-barrel ground artillery rocket weapon designed to deliver intense and rapid fire on high-value ground targets. It achieves direct hits and provides a high volume of fire to neutralize and destroy various enemy units and strategic target sites.

The launcher can operate and conceal itself in various locations, in addition to ease of transporting and positioning.

The launcher carries 12 rockets that can be fired in continuous mode within 24 seconds. Additionally, the launcher can be set to manual mode for firing a single rocket.

Technical Specifications

Rocket caliber: 70 mm (2.75 NATO)

Maximum range: More tahn 10 km

Number of Outriggers: 3

Firing system: manual and automatic

Weight: 750 kg

Height: 170 cm

Number of barrels: 12



AL TAREQ



Al-Tariq is an integrated system equipped with an electro-hydraulic system that achieves speed and precision in the use of an 81 mm mortar mounted on a light vehicle platform. It facilitates the process of loading and unloading the mortar between the vehicle's surface and the ground, ensuring stability and accuracy during firing, and facilitating quick movement between locations.

It can carry up to 112 mortar rounds carried on both sides and is linked to an advanced electronic fire control system (FCS) in addition to a manual fire control.

Specifications:

Mortar 81mm system:

- Type :M252
- System weight: 43 kg.
- Maximum firing range: 5935 m.
- Crew capacity: 5
- Ammunition Capacity: 112 rounds carried on the sides of the rear bed.
- Feeding system: Manual.



Features:

- Electro-Hydraulic deployment system
- Easy to deploy.
- Race Ring for 12.7mm Gun with Gunner Shield
- Fire Control System (FCS)
- Software and Electronic Guidance System: Equipped with a guidance system that relies on firing tables.
- Advanced and User-Friendly Interface: A user interface that allows electronic reading of the mortar angles.
- Integrated Mapping System: Equipped with a mapping system to identify the target and display the firing range and circle.
- Location and Direction Determination: Ability to determine the mortar's location and direction using satellites or manually.
- Target Selection: Ability to select the target from the map or provide its coordinates using an image, QR code, or manual digital input.
- Multiple Measurement Units: Provides several measurement units (mils, degrees), (eastings, northings), or (longitude, latitude).
- New Ammunition and Firing Tables Addition: Ability to add new shells and firing tables.
- Multilingual User Interface: A user interface supporting both Arabic and English.



MOBILE MEDICAL SOLUTIONS



Various types of Basic Life Support Ambulances, Paramedic Ambulances, Mass Casualty Ambulances, VIP Ambulance, Mobile Clinics, and other solutions with different standards and specifications, to provide different levels of medical support to who need help.

Paramedic Ambulances

The paramedic's ambulance are equipped with very high standards. The standard equipment include the latest emergency medical techniques, designed to work as part of the emergency response service.



Field Ambulances

Field Ambulances are a body superstructure designed and reinforced using steel structure interior frame body to insure the rigidity of the super structure, mainly to be used on rough terrain and off-road.



The Field Ambulances are based on different commercial chassis.



MOBILE MEDICAL SOLUTIONS

Mass Causality, Four – Red, and Evacuation Ambulance

As a Multi-patient treatment and transportation; a high-performance vehicles are used to transport and treat multi patients, capacity of transporting 6 ,4, and 9 patients.

It is designed is to respond to emergency sites and can be deployed to major incidents, where multiple patients are present or expected by providing aid and transporting them quickly and efficiently.



Mobile Clinics

Mobile Clinics are a premier provider of workplace substance abuse testing and onsite medical services nationwide, offers complete and compliant packages of industry required bio-monitoring solutions and when it comes to onsite nursing and first aid station management in the construction field, MMS is the standard bearer.

Types:

- Mobile Eye clinic
- Mobile Mammography
- Mobile Dental clinic
- Mobile Pediatric clinic
- Mobile Laboratory



COMMAND & CONTROL VEHICLES

Command & Control vehicles are designed to provide the information superiority directly required for the supporting of the dominant maneuver forces, to provide an automated tactical command unit for mobile operations security and military missions, and provides the ability to support command and control functions during an operations, with performance objectives and increase potential for full on-the-move operations capability.



MOBILE WORKSHOPS

Mobile workshops are utilized as temporary service workplace or facilities for workers in places where it is not economically feasible to build a permanent building on a firm foundation.

Our mobile workshops fabricated to keep all types of tools and equipment that are needed for conducting a certain job.

These mobile workshops are efficient in functioning and very instrumental for providing mobility to certain processes.



LAND SYSTEMS & INDUSTRIAL SOLUTIONS CLUSTER



AL-MARED 8X8

Al-Mared is an 8x8 armored vehicle designed and developed to meet the latest defense and security requirements relied on this entry level. This armored vehicle offers a high level of protection according to STANAG 4569 KE L3 upgradeable to STANAG L4. The vehicle can be used as APC or as fighting vehicle with various armament options.

Crew	8+2
Dimensions (L x W x H)	8000 x 2960 x 2875mm
Gross Vehicle Weight	25000 Kg
Engine	Diesel 420 HP
Transmission	Automatic 6 speed
Suspension	Independent suspension
Ground Clearance	400 mm
Maximum Road Speed	110 Km/h
Maximum Autonomy	600 Km
Gradient	%60
Side Slope	%30
Approach and Departure Angles	°60 & °60



AL HARES

Ideal for Security Border missions as patrol, reconnaissance and light strikes, Al-Hares offers a reliable compact solution meeting the various requirements of military and tactical operations. Based on the Land Cruiser 79 chassis, the vehicle has proven well off-road capabilities and the crew compartment protection level is B6.

Crew	3+1
Engine	Diesel 195 HP
Transmission	5 Speed Manual
Maximum Road Speed	120km/h
Maximum Autonomy	800 km
Armament	<ul style="list-style-type: none">• Race Ring with 12.7mm Gun• B6 Gunner Shield• Hatch
Winch	Electrical
Night Vision	IR Lights and Blackout System



AL-SATER ANTI-RIOT

AL-Sater anti-riot wheeled vehicle. It is custom designed to introduce armored shield in order to transport law enforcement troops to an emergency situation such as hostage rescue, barricaded suspects and riot scene. The vehicle is custom designed to have a specific attachment "armored portable shield" with the B6 protection level and equipped with water cannon and 2000 ltr water tank trailer.



Features:

1. Hull design on CAT chassis.
2. B6 protection level.
3. Portable shields.
4. Water cannon.
5. 2000 ltr Water tank.

Applications:

1. Internal security missions.
2. Anti-riot scenes.
3. Anti-terror scenes.
4. Border & Check point

Options:

1. Tracked CAT vehicle.
2. Electrical forklift.
3. Closed shields
4. LRAD System



REBUILD OF MEDIUM AND HEAVY ARMED VEHICLES (WHEELED AND TRACKED).

CVR(T) VEHICLES MODIFICATION AND REBUILD

The CVR(T) family includes Scorpion and Scimitar light reconnaissance tanks, Spartan armoured personnel carriers (APC)s, Sultan command and control vehicle, Samaritan armoured ambulance, and Samson armoured recovery vehicle.

All members of the CVR(T) family were designed to share common automotive components and suspension; aluminium armour was selected to keep the weight down.

In addition We do:

ebuild, Refurbishment, overhaul , modifications, armament and modernization of different type wheeled and tracked vehicles.

FIREFIGHTING TANKS

A wide range of water tanks for firefighting with different formats and capacities suitable for the needed space and storage requirements. The water tanks are fully equipped with all the necessary items and accessories required.

Standard Features

- Built on various chassis.
- Material comprised of galvanized steel.
- Internally installed baffle plates, suitably protected against corrosion.
- Easy access for maintenance purposes inside the tank.
- Water pump: Centrifugal type. P.T.O driven, not less than 1600lit/min.at 7 bar.
- Suction lift: at least 3m.



LAND SYSTEMS & INDUSTRIAL SOLUTIONS CLUSTER



SNAKEHEAD CUPOLA II

Closed cupola fitted with 13 vision blocks,

A fully closed cupola fitted with 13 vision blocks, enabling the gunner to have wide surveillance angles of the perimeter around the vehicle.

Using a gear assisted or motorized ring mount system with an override mechanism, provides the user with a smooth °360 of traverse.

Different protection levels:

- BR6
- SATANG I
- SATANG II

Armament options:

- 7.62mm Machine Gun
- 12.7mm Machine Gun



MITRAS



Ballistic resistant booths made by armored steel are skillfully engineered to meet international standards, ensuring the highest security and protection for guards and security staff.

Features

- Different protection levels; BR6, SATANG1, SATANG2
- (8) vision blocks
- AC Unit
- Internal and External Lighting Systems
- Suction Fan
- Fire Extinguisher

Optional

- Internal Ladder
- Ring with Cupola
- Weapon Mounts
- Cameras
- Racks for Communication Systems

RING MOUNTS

The heavy-duty steel ring mount designed to be a common ring-mount solution with easy, direct integration on a variety of vehicles and security rooms.

The high performance ring mount is designed to be mounted on a variety of vehicles; heavy and light machine guns, open turrets and cupolas with the capability of handling up to 600kg of weight.

General Specifications:

Outside Diameter	1000mm
Inside Diameter	830mm
Materials	Hardened Steel 1045
Total Weight	80 - 135 kg
Interface Options	<ul style="list-style-type: none"> • 5.56mm Machine Gun • 7.62mm Machine Gun • 12.7mm Machine Gun

Manual Ring Mount



Gear-Assisted Ring Mount



Motorized Ring Mount





TROOPS GEAR & ARMAMENT SOLUTIONS CLUSTER

With the establishment of the Troops Gear & Armament Solutions Cluster, KF has covered a major facet of the defense industry, where various products and calibers are tailored to different troops' requirements.



TROOPS GEAR & ARMAMENT SOLUTIONS CLUSTER



60MM MORTAR

60 mm Mortar is a highly accurate purposely designed and developed by KF and manufactured to meet the requirement of Armed Forces users and Specialized Units in order to operate under toughest environmental conditions.

FEATURES:

- Complete system with bipod, base plate and sighting system
- Tough barrel assembly
- Effective Bipod for all terrains
- Simple operated sighting system

Caliber	60 mm
Maximum Range	2600 m
Minimum Range	150 m
Elevation	45°-85°
Traverse	110 mils
Number of charges	3
Total weight	15.9 kg
Barrel weight (with breach)	4.7 kg
Bipod weight (with metal belt)	6.0 kg
Base plate weight	4.5 kg
sight weight with base	0.7 Kg
No of Crew	2
Rate of fire	30 rounds /min



JAWS TACTICAL PISTOL JSP-9

The JAWS JSP9- tactical pistol has been designed and developed by Jordan Armament and Weapon systems (JAWS) using high-quality materials. Its polymer frame makes it lightweight and provides a uniquely designed full grip for maximum stability in wet and humid environments. The pistol has been tested under the harshest conditions and field environments, considering ease of carry, firing, and reliability, and meets the strictest military standards. It is suited for special operations, internal security forces, and elite units. The pistol features a hammer release system with a lighter trigger pull and a Picatinny rail for mounting a flashlight, or aiming devices as needed for the mission.

Strike sys. Compact

SPECIFICATION

Caliber	9X19 mm
Action	Semi Auto
Magazine Capacity	17 rd
Frame Material	Polymer
Trigger weight	1.3 - 1.8 Kg
Sights	Fixed, 3 Points
Rifling	6 Grooves, RH
Barrel Length	92.45 mm
Weight without Mag	720 gm
Over all Length	190 mm
Height	140 mm

Strike sys. Standard

SPECIFICATION

Caliber	9X19 mm
Action	Semi Auto
Magazine Capacity	17 rd
Frame Material	Polymer
Trigger weight	1.3 - 1.8 Kg
Sights	Fixed, 3 Points
Rifling	6 Grooves, RH
Barrel Length	112.25 mm
Weight without Mag	790 gm
Over all Length	210 mm
Height	140 mm



JTP-9



JTP9-C

JORDAN TACTICAL PISTOL (JTP-9)

The JTP-9 pistol designed and produced from the highest quality materials and tested in the harshest conditions according to Military and NATO standards. Designed with functionality and reliability to meet the most rigorous military requirements and serve the needs of military special operations and security services.

The pistol features a picatinny rail, in order to attach a flashlight or aiming modules depending on the mission requirements.

SPECIFICATION

CALIBER	9x19 mm
WEIGHT	840 g (without magazine)
LENGTH	(210) mm (8.267) inch
MAGAZINE CAPACITY	16+1

ASSAULT RIFLES

Produced based on the AR15 platform, the JAR-556 is, distinguished by precision and functionality in harsh adverse environmental conditions, and developed to increase accuracy with a high level of overall performance, in order to meet the most rigorous military requirements.

The rifles comes with NATO standard accessories. Additional accessories can be added upon request, including different barrel lengths according to user's mission requirements.



General Specifications

CALIBER	(5.56 × 45) mm NATO
MAGAZINE CAPACITY	30 Rounds
RIFILING	1:7



M16/M4 CONVERSION KIT

Added components that convert your live fire weapon and extends the life of the M16A1 to become equivalent in quality and performance to the advanced M4 carbine.



TACTICAL KNIFE

Jordan Tactical Knife

LENGTH	(335 ± 1) mm (13.19) inch
COATING	Black Oxide
MATERIAL	High Carbon Steel
HARDNESS	50-58 HRC



Damascus Knife

LENGTH	(335 ± 1) mm (13.19) inch
COATING	Black Oxide
MATERIAL	Damascus Steel
HARDNESS	50-58 HRC



Folding Knife

LENGTH	10.25"
COATING	Black Oxide
MATERIAL	High Carbon Steel
HARDNESS	50-58 HRC



TROOPS GEAR & ARMAMENT SOLUTIONS CLUSTER



AMMUNITION

Small caliber ammunition according to NATO, CIP, and MIL standards:

- 9 x 19mm PARA (FMJ)
- 5.56 x 45mm SS109 / M193
- 7.62 x 51mm M80
- 7.62x39 mm - M67



Different shot shell cartridges are produced according to CIP standards:

- No.6, 32 g.
- No.7, 32 g.
- No.9, 28 / 24 g.
- Buckshot 00B, 9 pellets





TROOPS GEAR & ARMAMENT SOLUTIONS CLUSTER



NIGHT VISION

A100 Monocular Night Vision Goggle

PRODUCT DESCRIPTION

A100 Model Night Vision Monocular offers a high resolution intensified Night Vision image in a compact, lightweight and yet rugged design. It features a single tube and single-eyepiece configuration.

GENERAL SPECIFICATIONS

- Adjustable Diopter
- Built-In IR Illuminator
- Handheld or Weapon Mounted Operation
- Helmet and NBC Mask Compatible
- Hand Held
- Weight (Without Battery): Less than 350g



A200 NIGHT VISION BIOCLAR

PRODUCT DESCRIPTION

A200 Night Vision Biocular offers a high resolution intensified Night Vision Image in a light weight and compact configuration.

GENERAL SPECIFICATIONS

- Built in IR Illuminator
- Adjustable Diopter
- Helmet and NBC Mask Compatibility
- Weight (w/o accessories): 600g



A340 / A360 NIGHT VISION WEAPON SIGHT

DESCRIPTION

4X and 6X Individual Night Vision Weapon Sight is designed to increase the aiming capability of modern infantry via Image Intensification Technology. This unique, new, high performance, individual Night Vision Weapon Sight is compact, lightweight and user friendly.

GENERAL SPECIFICATIONS

- Adjustable diopter
- Reticle and reticle Adjustment system options
- Duplex/ mil-dot/ custom design reticle upon request

Technical Specifications	A340	A360
Magnification	4X	6X
Field of View	10 °	6.3 °
Objective F-Number	1.5	2
Minimum Focus Distance	20 m	30 m
Eye Relief	25 mm	25 mm
Weight	1150g	1350g



A360



A340

A500 AVIATOR'S NIGHT VISION GOGGLE

PRODUCT DESCRIPTION

The A500 Aviators Night Vision Goggle is specially designed with an advanced Night Vision System for pilots to provide Situational Awareness.

GENERAL SPECIFICATIONS

- Fixed Wing/ Rotary Wing Helmet Adapter
- Over-light exposure protection
- Cockpit compatible Class A/ B/ & C Filters
- User Friendly Adjustments
- Adjustable Diopter

Technical Specifications	
Magnification	1X
Field of View	40 °
Objective F-Number	1.5
Minimum Focus Distance	25 cm
Eye Relief	25 mm
Weight (with batteries)	590g





DAY SIGHT

A940 WEAPON DAY SIGHTS

PRODUCT DESCRIPTION

A940 tactical scope has exceptional resolution and outstanding imaging performance. It is designed for harsh tactical environments. With the ability to provide dual FOV to their user they serve as dual purpose sights with providing situational awareness via 1x and marksmanship via 4x.

GENERAL SPECIFICATIONS

- . Dual magnification (1x-4x / 1.5x-6x)
- . Red-dot and ballistic reticle
- . Custom reticle design upon request
- . Reticle brightness adjustments
- . Easy zeroing
- . MIL-STD-1913 compatible mounting adapter



A941/A961 WEAPON DAY SIGHTS

PRODUCT DESCRIPTION

The A941/A961 Day Sights are reticle reflected and low-weighted rifle Sights with two fields of view that are designed for dual usage with Infantry Guns and Sniper Guns.

GENERAL SPECIFICATIONS

- . Mil – dot or Ballistic Reticle
- . Custom Reticle Design Upon Request
- . Reticle Brightness Adjustment
- . Easy Zeroing, Faster bore-sighting and easier mounting to gun
- . Complies with Military Specifications
- . Adaptable to Picatinny Rail According to MIL-STD-1913





THERMAL SIGHT

T360-S / T375-S THERMAL WEAPON SIGHT

DESCRIPTION

The T360-S / T375-S Thermal Weapon Sight is an uncooled weapon sight that operates with a high resolution 8-12 μm detector. It has a rugged design that enables it to operate within military environment standards. Due to its latest detector technology the system provides high DRI performance and imaging capability.



GENERAL SPECIFICATIONS

- Automatic Image Optimization
- Image Recording and Playback
- Polarity Options
- Light Proof Eyecup
- Ballistic Reticle
- Wireless Head-up Display (Optional)
- Field of View : $10.3^\circ \times 7.7^\circ$
- Weight (w/o battery & accessories): 780g

T360-D THERMAL WEAPON SIGHT

PRODUCT DESCRIPTION

T360-D Thermal Weapon Sight is an uncooled weapon sight that operates with a high resolution 8-12 μm detector. It has a rugged design that enables it to operate within military environment standards. Due to its latest detector technology the system provides high DRI performance and imaging capability.



GENERAL SPECIFICATIONS

- Automatic Image Optimization
- Wireless Head-up Display (Optional)
- Dual Used as Clip-On and Thermal Weapon Sight
- Ballistic Reticle
- Image Recording and Playback
- Light Proof Eyecup
- Field of View : $10.3^\circ \times 7.7^\circ$
- Weight (w/o battery & accessories): 850g



AL-OQAB

Recently, there was a need for a mobile day-night vision system to be placed in various border areas that have a topographic characteristics limits vision capability for fixed systems located within the locations of border guard towers, therefor Al-Oqab came up to be an operational solutions that provides a mobile surveillance system consisting of an integrated photoelectric sensing system installed on an electromechanical lifting system.

The photoelectric sensing system "Dragon Eye" consists of the latest thermal cameras, daytime cameras, a laser rangefinder and GPS subsystems. In addition to the main vision tasks the system software have a built-in artificial intelligence that have the ability to automatically track targets, motion detection, and accurate acquiring of targets coordinates.

Properties:

- The photoelectric sensing system is installed on a V8 Toyota Land Cruiser 78 (diesel engine).
- The photoelectric sensing system "Dragon Eye" provides a range of vision depending on the type of target as shown in the following table:

	Tank size target 2.3x2.3m	Human size target 1.8x0.5m
Detection	16000m	10000m
Recognition	9000m	4000m
Identification	4500m	2000m



- Dragon Eye is equipped with a Pan-Tilt have a traverse range of 360°, elevation range -40° degrees to 40°.
- Dragon Eye is mounted on military specifications electromechanical lifting system capable of lifting up to 4 meters.
- The vehicle power system is upgraded in order feed all the added systems with electrical power for about 30 continues hours, the power system can be recharged while the vehicle on the move (engine is on) or from an external power source.
- The interior decoration and fixtures are made of high quality materials to ensure a high service life to reduce the need for maintenance.
- Dragon Eye have the ability to track targets and determine their coordinates.
- Dragon Eye control station is equipped with a large internal memory to record for several days.
- The vehicle is equipped with an infrared lights (front and rear) for night driving while implementing blackout mode.



SAGER THERMAL SIGHT

SAGER THERMAL SIGHT FOR KORNET-E ANTI TANK GUIDED MISSILE

- . Optimized For Kornet-E Anti-Tank Guided Missile
- . Field Proven
- . Long Range Cooled Thermal Camera
- . Portable And Self Powered
- . Easy Integration

PRODUCT DESCRIPTION

SAGER is a complete system solution that equips the Anti-Armor/Anti-Tank Missile Launchers with a modern, compact, low weight and cost effective Thermal Imaging Solution.

GENERAL SPECIFICATIONS

- . Operation Mode Selection (Direct View or Thermal View)
- . Anti-blooming Feature
- . Image Enhancement Algorithm. Power On / Stand-By / Off Modes
- . Image Freeze Mode
- . Polarity Change
- . Electronical Boresight
- . Controls on the Sight
- . Easy-to-use Mechanical Mounting Interface

Field of View:

Continuous Zoom Lens from Narrow to Wide FOV

Narrow FOV : $2^{\circ} \times 1.6^{\circ}$

Medium FOV : $2.9^{\circ} \times 2.3^{\circ}$

Wide FOV : $16.8^{\circ} \times 13.5^{\circ}$





AL-KASHEF

LONG RANGE INTRUSION DETECTION

CAPABILITIES

- Walking / Running
- Digging
- Excavator Digging
- Cutting
- Climbing
- Leak Detection + Other Activities as Add-ons



TECHNOLOGY

- Artificial Intelligence classification
- Range up to 50 km
- Standard fiber optic cable as sensor
- Fast installation and calibration
- Easy integration with other sensors
- Extensive field experience

APPLICATIONS

- Critical Facilities
- Pipelines
- Borders
- Railways
- City Infrastructure



TROOPS GEAR & ARMAMENT SOLUTIONS CLUSTER



PERSONAL PROTECTION EQUIPMENT (PPE)

HIGH PERFORMANCE BALLISTIC HELMETS

Lightweight ballistic helmets with an impact protection meeting EN397 head protection standards.

Constructed from aramid pre-impregnated reinforcement fibers using MAMT patented technology for up to 10% improved ballistic performance.

- HIGH CUT HELMETS
- BALLISTIC HELMETS
- PASGT HELMETS
- BOLTLESS HELMETS
- COMMUNICATIONS HELMET
- AIR BAG SYSTEM (Internal Comfortable Kit)



DYNEEMA, CERAMIC, SILICON CARBIDE PLATES

Lightweight Dyneema, Ceramic and Silicon Carbide plates offering NIJ level III and IV protection.

Weight: 880 g - 2880 g



WIDE VARIETIES OF BODY ARMORS AND TACTICAL VESTS

Body armours are made using aramide fibers (Twaron® or Kevlar®) or UHMWPE (DYNEEMA®), sealed in a waterproof bag and inserted in a durable nylon Cordura® or polyester outer garment with bullet-stopping protection meeting NIJ level IIIA. Our Tactical vests designed to carry large loads for various missions.

GENERAL FEATURES

- Lightweight
- Sufficient number of pouches
- Quick release
- Free Sizes & different colors



SPECIAL BOOTS

General Features

- Full Grain Cow Leather or Suede Leather Upper with innovative designs
- Direct Injection Rubber - PU Sole
- Cordura Fabric with Tough Wear Resistant
- Padded Tongue and Collar
- Anti-Bacterial Cushioning Insole Sock
- Speed lace D-ring (Rust Proof Metal)
- Sizes Available: 36 - 47





VR TECHNOLOGIES SOLUTIONS

VMAR Technologies Lab has been established as an incubator for simulation and virtual reality development that could be utilized in various applications, including the following:

- Assembly Training
- Maintenance Training
- Military Training
- Virtual Tours
- Virtual Manufacturing Reviews
- Aviation Maintenance Training

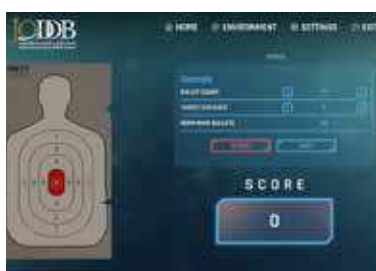


KF VR Solutions for Special Operations Forces Training: •

- The simulator offers a solution to Special Operations Forces training, through dynamic challenge courses.
- The simulator enables testing the skills and proficiency under various situations for individuals and teams.

Missions:

- Clear areas from enemies.
- Rescue hostages
- Test evasion ability, speed, response and planning.





E-WAR TABLE

Revolutionizing Military Operational Planning Platform

Enhance Your Operational Planning with the KF Digital Sand-Table platform. It empowers military commanders at all levels to visualize, enhance, share, and evaluate their plans.

Key Features

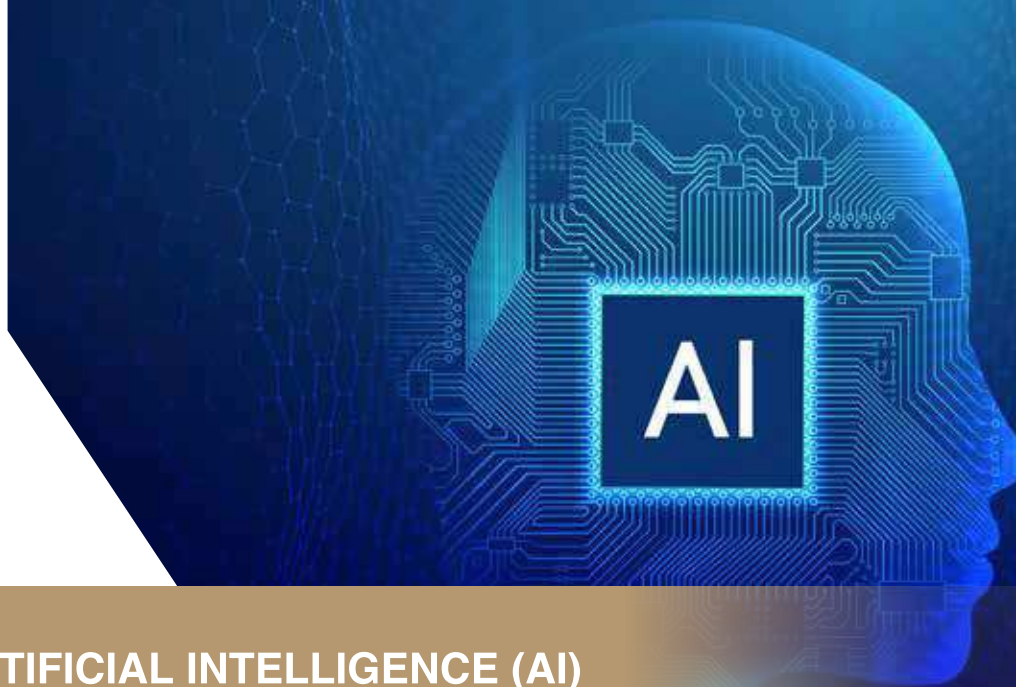
- **Multi-Digital Maps Providers:** Seamlessly integrate multiple digital maps for comprehensive operational planning.
- **3D Military Symbols:** Project and allocate 2D NATO symbols based on the operational map.
- **Interactive Interface:** Enjoy a user-friendly interface for real-time updates and planning.
- **Scalability:** Adaptable for various military operation levels and scenarios, including multi-domain planning.
- **Precision:** Visualize 3D satellite maps for more accurate planning, with the ability to overlay multiple maps simultaneously (e.g., contour maps over satellite images).
- **Revolutionary Tools:** Allocate 2D/3D military symbols across multi-digital maps with tools for plan presentation (e.g., line of sight, area highlight, animation).
- **Versatile Use:** Suitable for both operational and training purposes.
- **Plan Archiving and Sharing:** Easily archive and share plans between commanders.

Deployment:

- **Stand-Alone Laptop:** Ideal for small military formations.
- **Theater:** Perfect for large military formations and multi-domain operational planning.

Future Work:

- **Artificial Intelligence Tools:** Develop area analysis tools, such as soil type analysis, obstacle identification, and best force utilization for specific areas.
- **Live Surveillance Footage:** Integrate live footage from UAVs, planes, or satellites.
- **Multi-Commander Augmented Reality:** Enable on-premises or remote AR planning for multi-commander coordination.

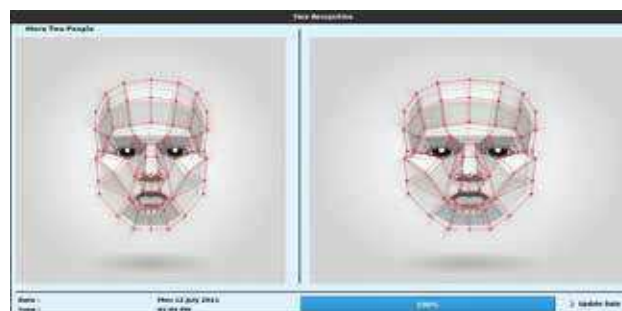


ARTIFICIAL INTELLIGENCE (AI)

Stationary Face Recognition (ISENTRY)

Specification:

- Accurate Face Recognition
- High-Speed System
- Any Camera can be installed
- Sound Alarm.
- More than 200K Image
- Store Logs for All Recognition Action.



KF Eagle

Specification:

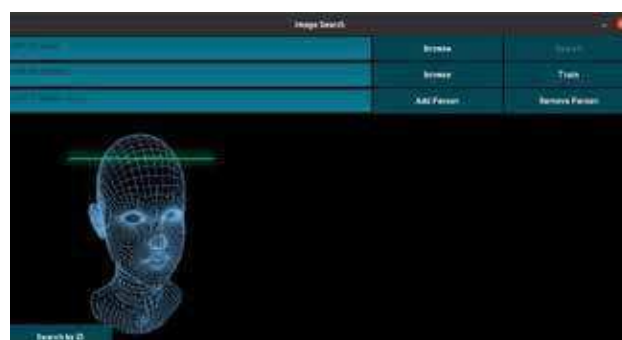
- See Through Display
- Accurate Face Recognition
- High-Speed System
- 8MP Camera
- Up to 2M distance
- Sound Alarm
- Portable System
- Up to 100K Image



Face Search (THE SIBYL)

Specification:

- Accurate Face Recognition
- High-Speed System
- Ability to Modify Similarity Threshold.
- Return The Top 4 Similar Persons.
- Ability to Add/Remove Person Using GUI.
- More than 1M image.





AI

ARTIFICIAL INTELLIGENCE (AI)

Automatic Gate System

The automatic gate system relies on artificial intelligence algorithms to recognize vehicles by distinguishing the license plate numbers defined for the system to manage the process of opening and closing gates and controlling them automatically.

Key Features:

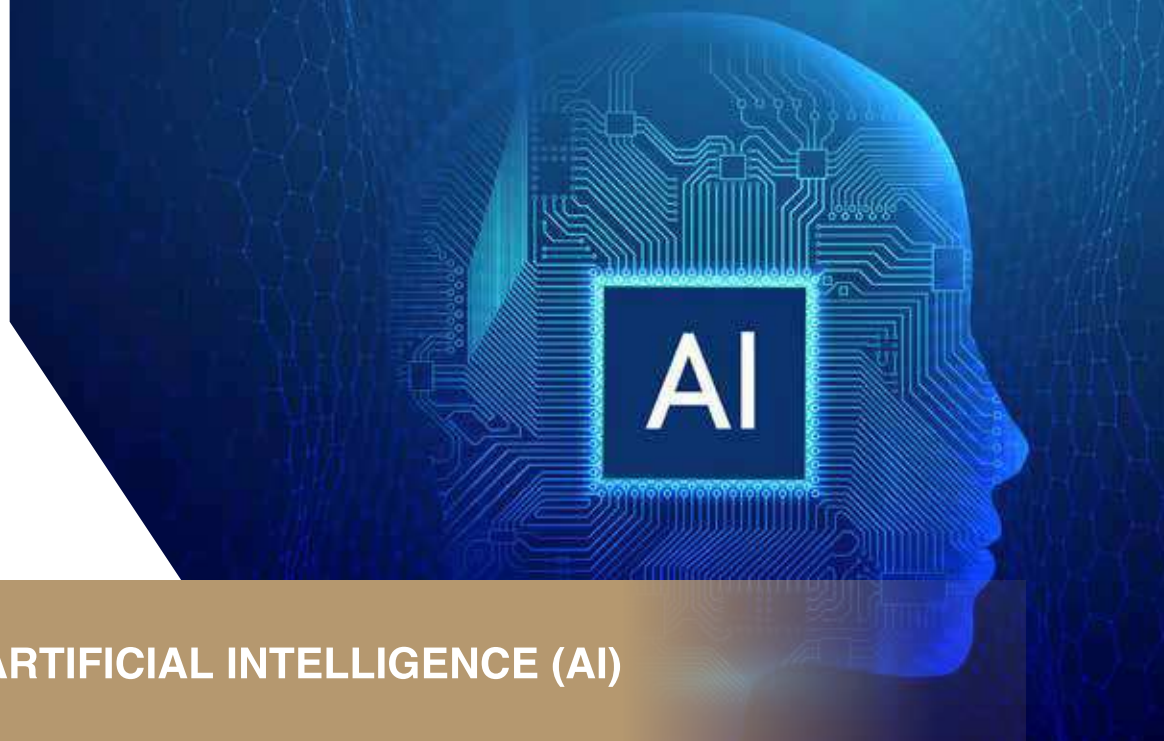
- Automatic vehicle entry & exit control
- Vehicle driver verification
- Real time operation 30 FPS
- Detect all vehicles types and plates
- Large lookup database up to 250,000.
- Fully customizable GUI with Arabic and English support
- Provide customizable reports

Automatic Patrol System

The Automatic patrol is a system that relies on artificial intelligence algorithms to enable security patrols to identify wanted vehicles by detecting and recognizing their license plate numbers.

Key Features:

- Real time operation 30 FPS
- Detect all types of vehicles and vehicles plates
- Detect and lookup up to 9 vehicles plates numbers per frame
- Fully customizable GUI
- Provide automatic reports for detections



ARTIFICIAL INTELLIGENCE (AI)

Automatic Entry System

Fully AI-based Face recognition system designed to enable automatic entry for personnel of large institutes.

Key Capabilities:

- Real time control and operation at a rate of 30 FPS.
- Pose and face expression variance immunity.
- face lookup database up to 250,000.
- User friendly GUI to enable new personnel addition and lookup for Blacklisted personnel
- Provide customizable entry reports

UAV Navigation & Tracking System

The UAV navigation & tracking system equips drones with the ability to automatically track and navigate towards user-selected ground targets

Key Features:

- Navigation and target selection with minimal user intervention
- Fully customizable GUI for navigation, selection and target tracking
- Multi-modal algorithm for enhanced tracking accuracy
- Support both multi rotor and VTOL drones
- Real time control and operation at a rate of 30 FPS



AI

ARTIFICIAL INTELLIGENCE (AI)

Super Resolution System

The Super Resolution system is an AI-based solution meticulously crafted to significantly improve the quality of low-resolution images. Employing a sophisticated approach, this system harnesses the power of three distinct AI models, each meticulously trained to enhance specific types of images (Faces, Vehicle Plates and Aerial Images). The Super Resolution system stands poised to transform pixelated, blurry, or otherwise suboptimal images into clear, high-definition masterpieces.

Key Features:

- Multi-Model Enhancement
- AI-Powered Upscaling
- User-Friendly Interface
- Integration Capabilities
- Scalable Performance

Chest X-Ray Diagnostic Tool

The Chest X-Ray Diagnostic Tool is an advanced decision support system powered by artificial intelligence, designed to assist healthcare professionals in diagnosing eight common chest disorders using patient X-ray images. This innovative tool enhances diagnostic accuracy and efficiency, ultimately improving patient care and outcomes.

Key Features:

- AI-Driven Diagnosis
- Speedy Analysis
- User-Friendly Interface
- Integration Capabilities



ENCRYPTION CENTER

KF encryption center able to develop and modify cryptographic algorithms and systems to protect data confidentiality as it is stored, exchanged and transmitted via computers, transmission devices and smart phones on various networks.

Artificial Intelligence has enormous capabilities in a several fields; such as the ability to recognize faces, run autonomous cars, deliver better online search outcomes and strengthen business in various industries.

KF is focusing on AI adoption to create better future opportunities.

The AI trend has been hailed as the next industrial revolution, utilized to develop a wide range of applications in the military, security and civilian fields.

Products & Solutions:

Digital spider

Specification:

- List of the most engaging topics weekly and monthly and analysis of the results (public opinion trends).
- Studying and analyzing the behavior of influencers on social media and tracking the growth of their accounts.
- Identifying the most influential followers (can be used in information operations).
- Creating campaigns to monitor and analyze public opinion trends based on the most engaging topics.
- Presenting analytical reports to decision-makers.
- Arabic English Sentiment analysis.
- Campaign analysis based on content.
- User anomaly detection.
- Fake users' identification.
- Hashtag and Keywords forecasting.



LOCKRYPTER

Specification:

- Encrypt all type of data (text, audio, video, images, ...)
- Cross Platform.
- Encryption algorithm used is AES-256.
- Fast Encryption, Decryption process.
- Can be run on specific devices.
- User can allow certain devices to decrypt.
- Data integrity check.
- Without the software no-one can decrypt the cipher even if he has the key.





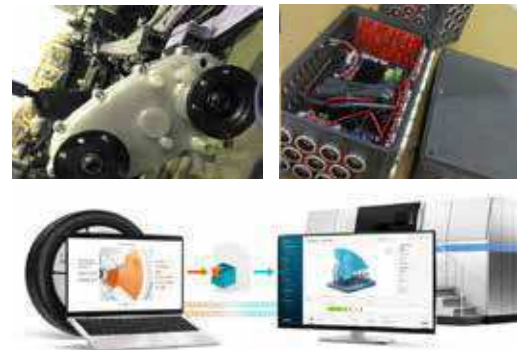
3D PRINTING

A unique 3D printing capability that enables design teams to quickly produce high-quality, realistic products and prototypes at relatively low cost when compared to other methods such as machining or outsourcing.



Products

- Virtual Reality Metal Welding Torch Integration Kit
- Virtual Reality Shooting Integration Kit
- Printed Fenders and molds
- Automotive spareparts
- Electrical enclosure
- Aviation structures and accessorie



Digitization

Digitization in additive manufacturing involves creating and managing digital models for 3D printing. It begins with scanning physical objects to generate 3D models or using CAD software to design parts. These digital files are stored in cloud-based systems or digital warehouses, enabling on-demand production. Digitization streamlines the design-to-production process, reduces lead times, and supports customization and rapid prototyping, while also minimizing physical inventory and associated costs.

Training

Our 3D printing services offer a range of solutions from large-scale prototypes End use parts and functional parts to intricate, high-resolution models. We utilize advanced technologies, including FDM, FFF, DMLS, SLA, and binder jetting, to meet diverse needs. Whether you require detailed resin prints,durable thermo-plastic parts, high-performance metal components or full-color prototypes, our services deliver high-quality results tailored to your specifications. The 3D printing process starts with preparing a CAD model and selecting a printer based on the part's application. An existing part can be scanned to create an STL file for reverse engineering or direct measurement. The printed parts are then inspected for accuracy using 3D scanning and PolyWorks software



STABILIZED REMOTE CONTROLLED WEAPON STATION

Designed for dynamic or static operation, to be used on ground stationary, ground mobile. The high-precision, lightweight, low-profile SRWS can be mounted on any armored fighting vehicle (AFV), main battle tank (MBT).

The SRWS is fully operable from inside the vehicle.

Features:

- Day-Night operation.
- Suits 7.62mm or 12.7mm machine guns.
- Auto tracking and stabilization capabilities.
- Fully functional remote control and backup manual control.
- Operated by one crew member.
- Passive and active distance measuring systems.
- Round counter.
- Compatible with a wide range of armored vehicles (wheeled and tracked).

Applications:

- Special forces operations.
- Internal security operations.
- Fast response forces operations.
- Border security operations.





SMART SWEEPER

The Remotely Controlled Improvised Explosive Device (RCIED) Jammer designed and developed by KF to protect the high value assets against Radio Frequency (RF) Controlled Improvised Explosive Devices, by jamming the communication between these devices and threats.

The entire frequency range is divided into several different modules to covers the military, commercial and citizen bands in VHF/UHF bands, GSM/CDMA, UMTS and Wi Fi frequency bands and 5G

KF RCIED Jammer is capable to counter simultaneously the following Radio bands and channels:

- Amateur Radios, UHF and VHF Radios.
- GSM 900, DCS 1800, 3G and LTE.
- Cordless Phones.
- ISM, WLAN Applications.
- Remote Control Equipment, Doorbells, Car Openers, etc.

A portable version is available as Man-back RCIED Jammer.

Specifications:

- Frequency bands: Selectable IED RF bands from 20 MHz to 6000MHz.
- All bands can work simultaneously or independently using a separate switch for each Band.
- Jamming type: Omni directional radiation jamming (360) degree.
- Power Supply: 12 or 24 DC Volt.
- Output power: Up to 100 watt for each band.
- Smart Jamming technique.
- VSWR Protection.
- Over-voltage and Over-current protection.
- High temperature cutoff.

Features:

- Upgradable.
- Easy to select the desired band.
- RF protection Suit.
- Designed for military environment.
- Smart signal power allocation.
- Suitable for most type of vehicles.
- Modular construction.

Applications:

- Military security forces.
- VIP protection.
- Special police.
- Bomb disposal squads.
- Anti-terror units.
- Border control units.
- Check point personal used.





SKY STORM C-UAS

The massive deployment and use of drones, the threat on national security also increased which requires a prompt response by law enforcement agencies and by systems integrators and developers to provide efficient solution to neutralize this type of threat. Sky Storm is KF's solution for drones detection and jamming. The system integrates various sub-systems to provide efficient detection. The detection system includes passive and active radars to detect small drones based on drones' specifications analysis, then the system interpolates to take suitable reaction accordingly

Applications:

- Military security forces.
- VIP protection.
- Special police.
- Anti-terror units.
- Border control units.



Specifications:

- Real-time measurement of the RF emissions from drones / UAVs.
- Detection distance up to 7 km. (depends on the UAV size and output RF power).
- Different operational modes based on user needs.
- Thermal and day camera suitable to switch monitoring of small threats at long distances or to monitor wide area of field.
- Simultaneous or independent operation of the bands.
- Detects unlimited number of drones at the same time.
- Works against UAVs "hidden" between buildings, plants, trees.
- The system can distinguish the type UAVs.
- Jamming type: Directional and Omni directional radiation with Automatic activation option.



SIGNAL STRIKER

KF has developed and built a variety of jammers customized to accommodate different operations providing ultimate solutions for military, security agencies and VIP protection, implementing the most effective and reliable jammer technology equipped to block, disrupt and prevent communication jamming remote control applications, spy cameras, UAVs and cellular base signals, obstructing the communication channels of terrorists or riot organizers.

The general design of the systems meet military requirements as well as international quality standards and requirements, supplied in sturdy cases for high mobility and reliability as they are highly portable and lightweight .

One of these jammers is UAV gun jammers Jammer which is a directional communication device to block, disrupt or prevent communication of UAVs.

Applications:

- Military security forces.
- VIP protection.
- Special police.
- Bomb disposal squads.
- Anti-terror units.
- Border control units.

Specifications:

Frequency Range	All GNSS bands, UAV Remote control and video transmission bands.
Jamming type	Smart Jamming technique depends on microcontrollers which makes the jamming more effective
Output RF power	10 - 100watt
Power Supply	AC or DC 24
Antennas	Directional or Omni-Directional
Beamwidth	From 30 degree to 360 degree
Protections	VSWR Protection , Overcharging and Over discharging protection and High temperature cutoff protection



EOD JAMMERS SOLUTIONS

A variety of jammers customized to accommodate different operations providing ultimate solutions for military, security agencies and VIP protection, implementing the most effective and reliable jammer technology equipped to clock, disrupt and prevent communication jamming remote control applications, spy cameras, UAVs and cellular base signals, obstructing the communication channels of terrorists or riot organizers.

The general design of the systems meet military requirements as well as international quality standards and requirements, supplied in sturdy cases for high mobility and reliability as they are highly portable and lightweight

Applications:

- Military security forces.
- VIP protection.
- Special police.
- Bomb disposal squads.
- Anti-terror units.
- Border control units.

Features:

- LED Interface to show the working frequency.
- Easy to select the desired band.
- Mobility, retractable extension handle and Strong polyurethane wheels with stainless steel bearings.
- RF protection Suit + carry case.
- Designed for military environment.
- Smart signal power allocation.

Specifications:

Frequency Range	900MHz – 2500MHz and 5700MHz – 5900MHz bands
coverage radius range	Depend on scenario (tested on 3.7 Km)
Jamming type	Smart Jamming technique depends on microcontrollers which makes the jamming more effective
Output RF power	Customized up to 100 watt
Operation period	3 hours (optional can be extended up to 8 hours)
Power Supply	Battery 24 DC Volt
Charging Power Source	AC 220 volt or DC (12-36) volt
Antennas	High gain omni directional for all bands (directional antennas to increase the range in one direction is also available).
Protections	VSWR Protection, overcharging and over discharging protection and high temperature cutoff protection

SILENT SHIELD



Jammer designed and developed by KF to protect the high value assets against Radio Frequency (RF) Controlled Improvised Explosive Devices, by jamming the communication between these devices and threats.

The entire frequency range is divided into several different modules to covers the military, commercial and citizen bands in VHF/UHF bands, GSM/CDMA, UMTS and Wi Fi frequency bands and 5G.

Smart Sweeper is capable to counter simultaneously the following Radio bands and channels:

- Amateur Radios, UHF and VHF Radios.
- GSM 900, DCS 1800, 3G and LTE.
- Cordless Phones.
- ISM, WLAN Applications.
- Remote Control Equipment, Doorbells, Car Openers, etc.

A portable version is available as Man-back or Stationary RCIED Jammer.

Specifications:

- Frequency bands: Selectable IED RF bands from 20 MHz to 6000MHz.
- All bands can work simultaneously or independently using a separate switch for each Band.
- Jamming type: directional radiation jamming.
- Power Supply: 12 or 24 DC Volt.
- Output power: Up to 100 watt for each band.
- Smart Jamming technique.
- VSWR Protection.
- Over-voltage and Over-current protection.
- High temperature cutoff.

Features:

- Upgradable.
- Easy to select the desired band.
- RF protection Suit.
- Designed for military environment.
- Smart signal power allocation.
- Modular construction.

Applications:

- Military security forces.
- VIP protection.
- Bomb disposal squads.
- Anti-terror units.
- Border control units.
- Check point personal used.



KF CELL PHONE AND WI-FI JAMMER



KF device for jamming cellular phones and Wi-Fi devices has been designed and developed for the purpose of effectively jamming mobile phone signals and internet access points (Wi-Fi) in a way that increases the effectiveness and range of jamming both receivers and transmitters

Additionally, it can simultaneously cut off communication on the following frequencies: GSM 900, DCS 1800, 3G, 4G, 4G+, and Wi-Fi channels

Technical Specifications:

Jammed Bands	Mobile phones bands, including GSM900, DCS +1800, 3G, 4G, and 4G All types Wi-Fi networks Bluetooth
Type of antennas	High gain Omni directional for all bands (Directional Antennas to increase the range in one direction is also available).
Number of frequency sub bands, (Tx modules)	per the considered most effective design ± 1.8
Type of interference	Fast Frequency hopping with random scanning
Power supply	VAC volt 220 VDC , battery system 24
Jamming modules protection	High VSWR High temperature Over load Over-voltage Over current

Applications:

- VIP meeting rooms.
- Prisons, military locations large campuses.
- Conference rooms.
- Meeting rooms.
- Examination halls.

Features:

- LED Interface to show the working frequency.
- Easy to select the desired band.
- Mobility, retractable extension handle and Strong polyurethane wheels with stainless steel bearings.
- RF protection Suit + carry case.
- Designed for military environment.
- Smart signal power allocation.



AL-MIQNAS

KF's Electronic Shooting System is designed for the purpose of training shooters, assessing their levels and competencies, and helping shooters and trainers identify missed shots and correct the aiming point. The system assists trainers and trainees in identifying the location of each bullet's impact by displaying it on a side screen next to the shooter. This allows for the correction of shooting errors and avoids the need to go to the target area for inspection. Additionally, the system can detect crossfire between lanes and bullets that rebound off the ground. The system equipment is rugged and military-grade, dedicated to operating in harsh environments, which makes it ideal for military marksmanship training.

It is ideal for use in training for military shooting applications. Additionally, the user interface is customizable according to user preferences and supports both Arabic and English languages.

Specifications:

Type of weapons	5.56 mm , 7.62 mm Supersonic speed and ability to Recognized as ricocheted rounds.
Shooting Distances	100m,200 and 300m.
Bullet Velocity	450 m/s at the target area ≥ 450 m/s.
Power	VDC V 18-75 / AC V275 -80
Detecting Window	160cmx150cm and can be customized per user requirement.
Accuracy	Better than ± 5 mm at the center of the target at still
Ingress Protection	All outdoor enclosures are IP66 minimum
Autoscoreing Software	Windows operated, User friendly, customizable
Data link	Wired RS485 or RF wireless link





VEHICLE POWER MANAGEMENT SYSTEM

KF designed electronic system that monitors the (overvoltage and overcurrent) of the vehicle's battery. It disconnects and reconnects electrical loads to protect the power source (battery) from excessive depletion, thereby increasing the lifespan of the engine, and ensuring the sustainability of the vehicle's operation for a longer time.

This facilitates a quick and effective response in military and security tactical missions as soon as the battery is recharged, and the loads are automatically reconnected when the battery voltage and current are within the predefined measurements set by the user. The system can be installed on all types of ground vehicles, both civilian and military (wheeled and tracked), equipped with monitoring, wireless communication systems, and other systems.

Features:

- Possibility of disconnecting high current.
- The possibility of changing protection levels according to user requirements through programming and without the need to change parts.
- The system operates continuously without interruption.
- Works directly when plugged in.

Specifications:

voltage level	12 Volt + 24 Volt
Current cut-off values	100-300 Amp (can be modified as per user request)
Weight(g)	1420 g (can be modified as per user request)
Dimensions	Diesel , 370 HP
Temperature Weight	High Mobility suspension



AL-Basheq

Al-Basheq is an An electric surveillance VTOL-UAV designed by KF that can hover, takeoff and land vertically (no runway needed), the airframe is made of full carbon fiber, and has a wingspan of 3.5 meters. The aircraft is used for surveying open areas such as border regions, agricultural lands, and water transmission lines and sources. It is also equipped to carry high-quality day and night cameras.

Specifications:

LENGTH	1860 mm
HEIGHT	590 mm
MAXIMUM TAKE-OFF WEIGHT (MTOW)	22 KG
CRUISE SPEED	21 m/s
MAXIMUM SPEED	30 m/s
FLIGHT TIME	UP TO 1 HOUR (60 minutes), depending on the payload.
FLIGHT RANGE	20 KM (Upgradable)
MAXIMUM PAYLOAD	3 KG
Payload type	Day or thermal camera (Switchable)
GCS	2 displays (for mission planning and monitoring)

COMPLETE CAMP SOLUTIONS



TURNKEY BASE CAMPS KF OFFERS

We offer a full range of turnkey base camp solutions specifically designed for military and government infrastructure projects, covering a wide variety of needs.



Emergency Camps



Prefab Camps



Sanitation Camps



Tents & Field Camps



Tactical Operations Centers



Mobile Field Clinics



Maintenance Facilities & Hangars



Tactical Operations Camps



Modular Homes



Info@keyforce.io
www.keyforce.io

